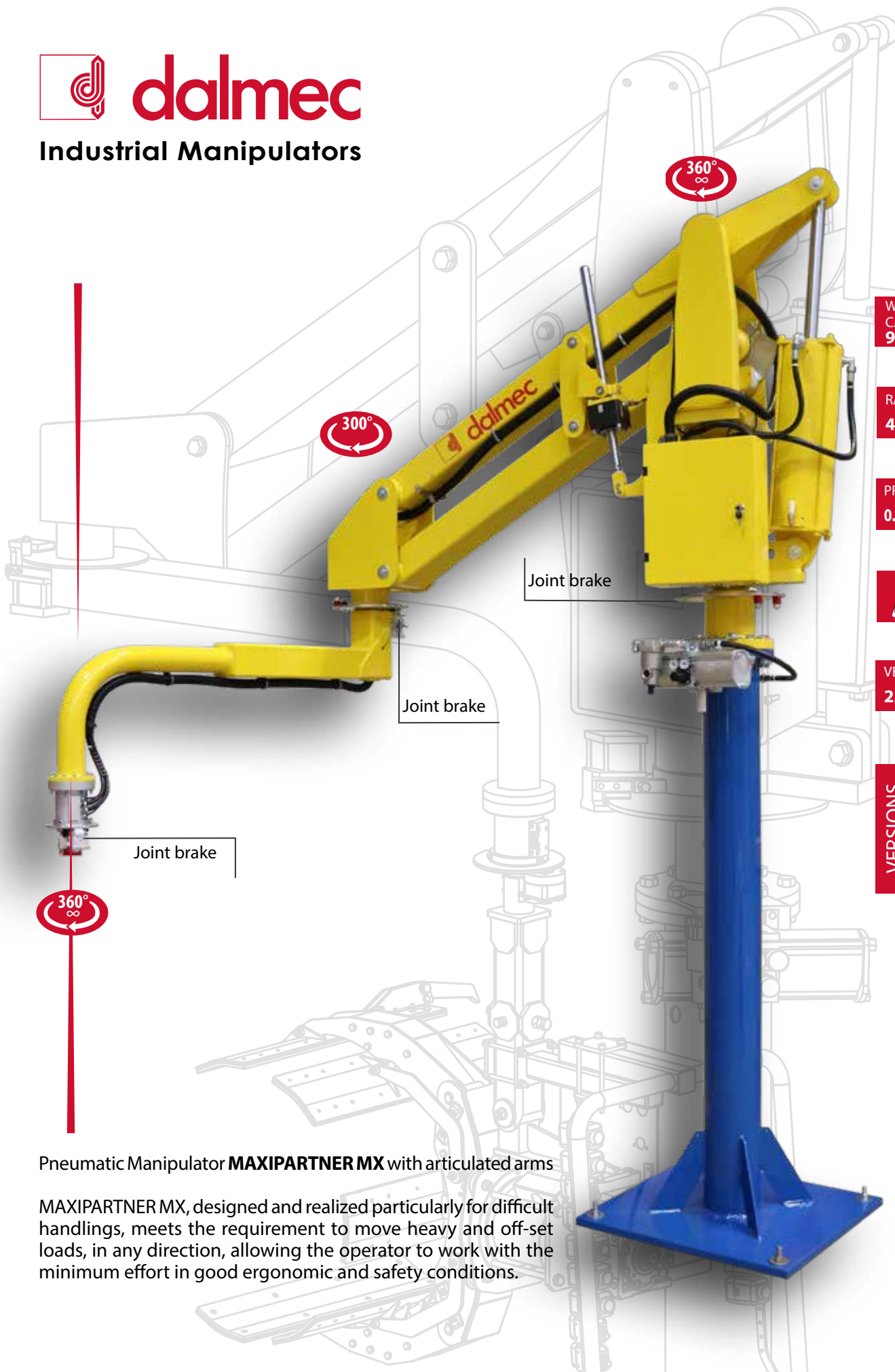




Industrial Manipulators



WEIGHT CAPACITY  
**900 Kg**



RADIUS  
**4500 mm**



PRESSURE  
**0.7-0.8 Mpa**



LOAD OFF-SET

VERTICAL LIFT  
**2200 mm**

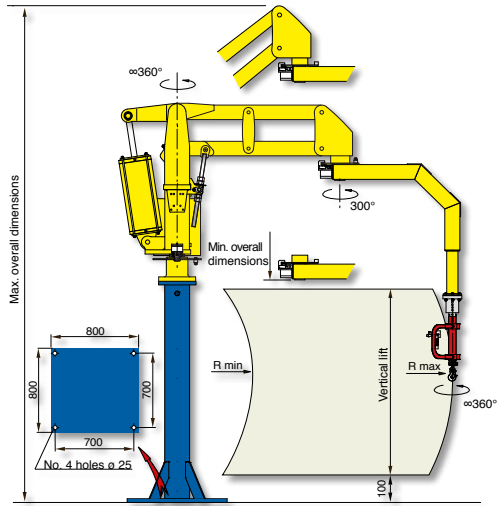
VERSIONS  
COLUMN  
FIXED OVERHEAD  
RUNNING OVERHEAD

Pneumatic Manipulator **MAXIPARTNER MX** with articulated arms

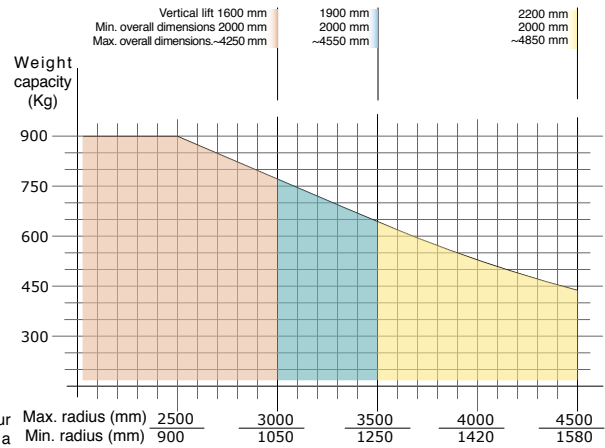
MAXIPARTNER MX, designed and realized particularly for difficult handlings, meets the requirement to move heavy and off-set loads, in any direction, allowing the operator to work with the minimum effort in good ergonomic and safety conditions.

# MAXIPARTNER<sup>®</sup> - MX

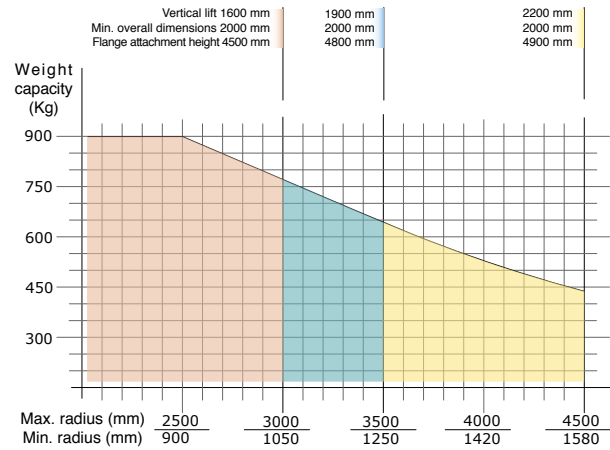
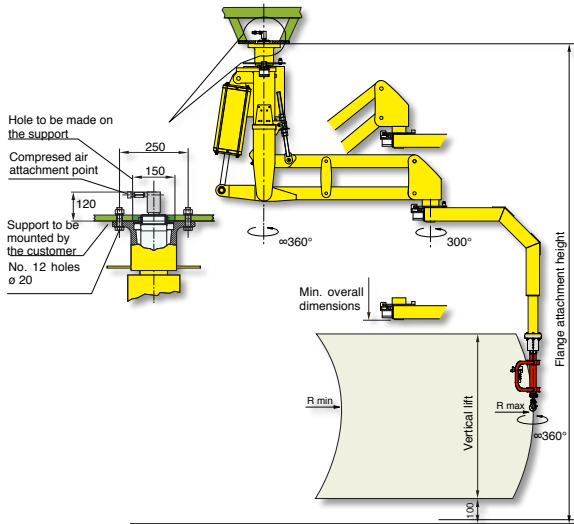
## Maxipartner column mounted - MXC



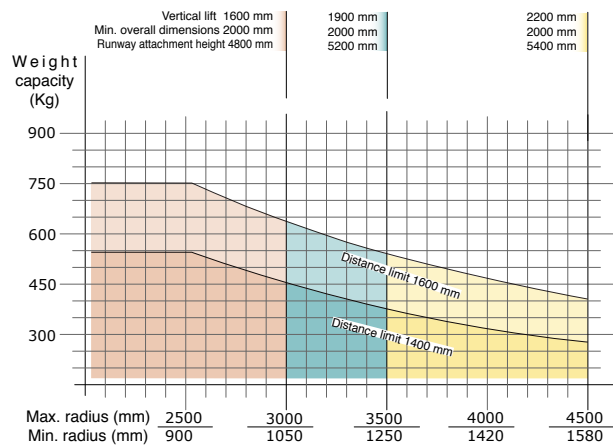
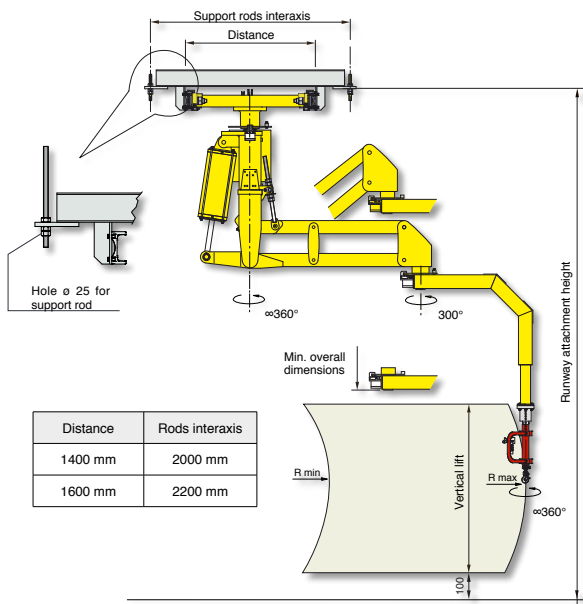
Structural versions: column mounted on fixed base-plate, autostable base-plate of our supply properly dimensioned or with autostable motorised trolley that translates on a simple profile track on the floor.



## Maxipartner overhead mounted - MXF



## Maxipartner overhead trolley mounted - MXS



Air supply: Dry and oil-free compressed air min constant 0.7÷0.8 MPa

Configuration and measurements may change upon the Customer's specific requirements