



## Industrial Manipulators



WEIGHT CAPACITY  
**1500 Kg**



RADIUS  
**5000 mm**



PRESSURE  
**0.7-0.8 Mpa**



**LOAD OFF-SET**

VERTICAL LIFT  
**2150 mm**

VERSIONS  
COLUMN

Pneumatic Manipulator **MEGAPARTNER MG** with articulated arm

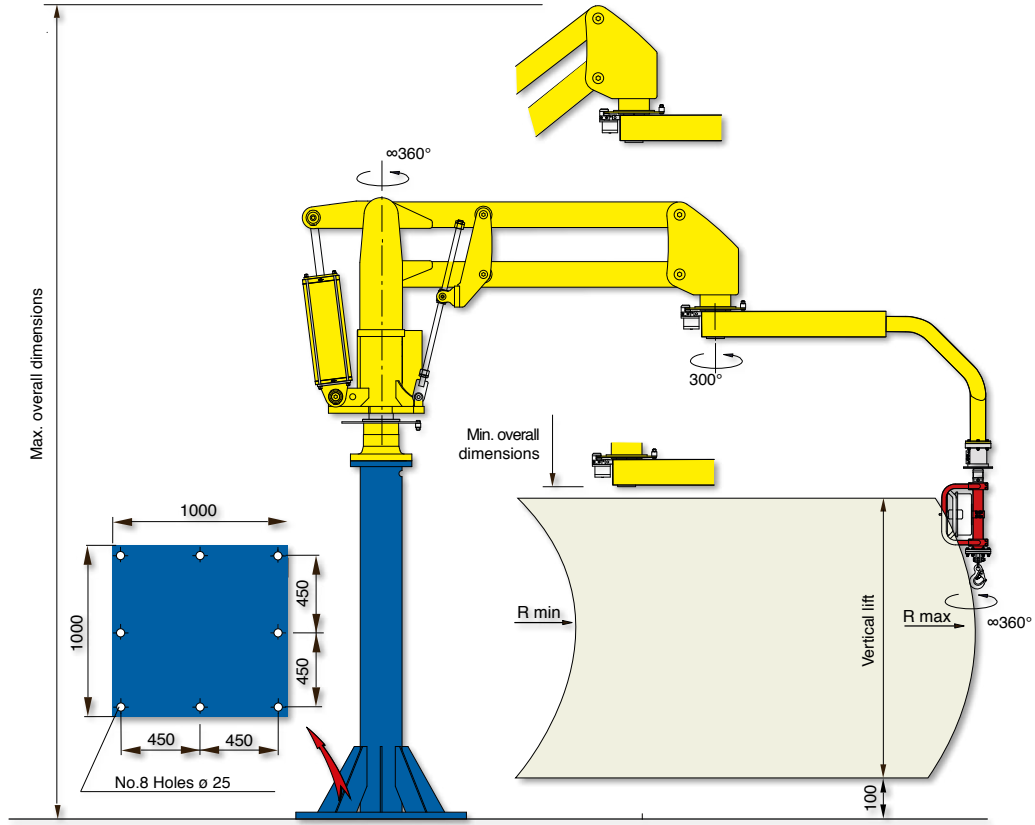
MEGAPARTNER MG, is a Manipulator with extremely high load capacity, is able to handle loads up to 1500 Kg and reach working radii up to 5000 mm with loads of 650 Kg, maintaining a good handiness and fluidity, assuring the operator to work with moderate efforts in good ergonomic conditions and with the utmost safety.

# MEGAPARTNER<sup>®</sup> - MG

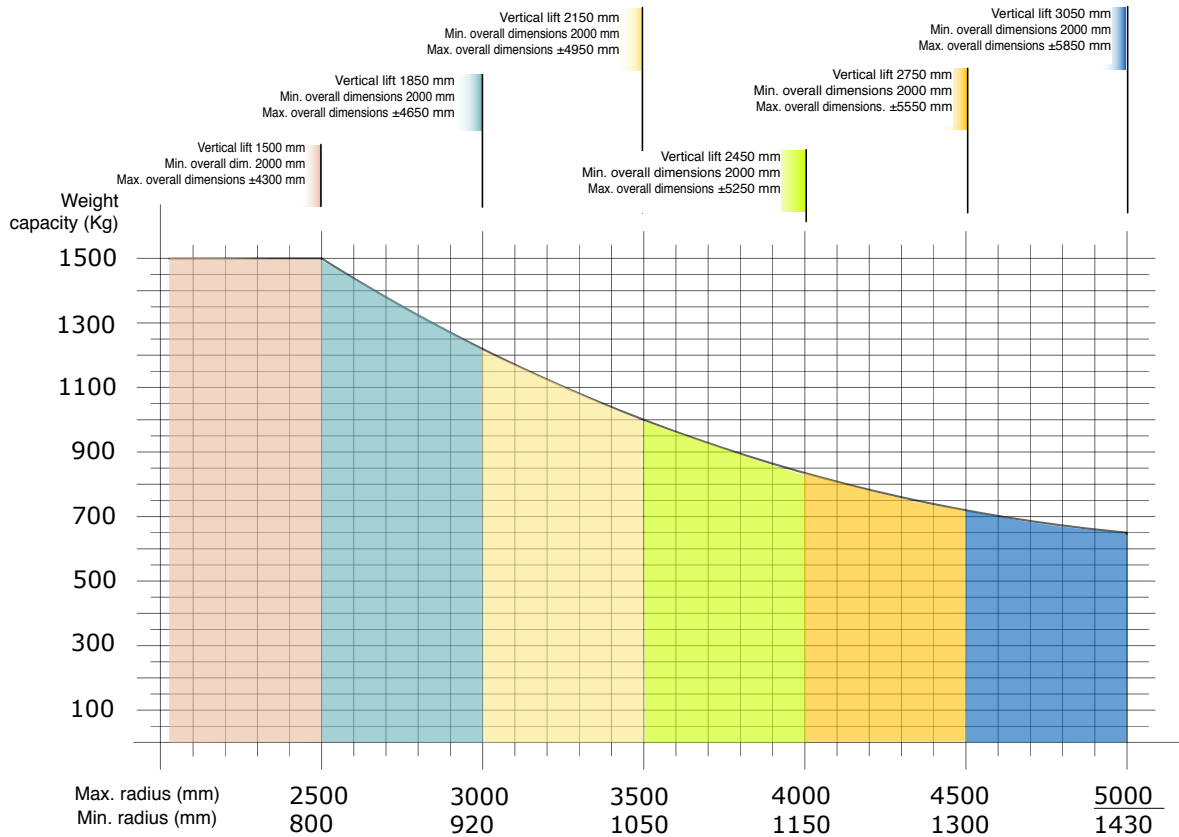
# Megapartner column mounted - MGC

Copyright © 2017 by Daimec S.p.A. Technical data and measures are indicative only and not binding. Daimec reserves the right to make changes, at any time without notice.

# MEGAPARTNER® - MG



Structural versions: column mounted on fixed base-plate.



Air supply: Dry and oil-free compressed air min constant 0.7÷0.8 MPa

Configuration and measurements may change upon the Customer's specific requirements

